

Indices of Deprivation 2010 – Torbay Summary

Introduction

The Indices of Deprivation 2010 (ID 2010) use a group of statistical indicators to rank the 32,482 Lower Layer Super Output Areas (LSOAs)¹ in England in terms of aspects of their deprivation.

Over 30 such indicators are combined to produce an overall **Index of Multiple Deprivation (IMD)**. Subsets of these indicators are also used to rank areas within seven different “**domains**” of deprivation: Income; Employment; Health Deprivation and Disability; Education, Skills and Training; Barriers to Housing and Services; Crime; and Living Environment. In addition, there are “**sub domains**” within some of these domains.

Annex A is a table of the components of the Index of Multiple Deprivation 2010 summarising the domains, sub-domains and indicators. Most of the indicators feeding into the domains use data from 2008 and population data for the same year is used to calculate rates.

The English Indices of Deprivation 2010 are based on broadly the same methodology as the previous version in 2007 and it is therefore possible to compare the current pattern of deprivation with the pattern in 2007. Most changes in rankings between 2007 and 2010 are therefore likely to reflect real relative change between the two time periods.

Note that changes in rankings reflect relative rather than absolute change so that, for example, deprivation may have lessened in an area where a ranking is worse than in 2007 because other areas have improved at a faster rate.

Multiple Deprivation in Torbay

There are 89 LSOAs in the Torbay Unitary Authority area. According to the IMD, 14 of these 89 areas are among the most deprived 20% nationally, the same number as in 2007. They are home to about 25,000 people. 7 of Torbay’s 15 wards contain at least one of these areas.

12 of these 14 areas are within the most deprived 10% nationally, 2 more than in 2007, split among 6 wards. After Bristol (32 LSOAs) and Plymouth (17 LSOAs), this is the third highest number of deprived areas among South West local authorities, and represents just under 19,000 people.

The overall pattern of multiple deprivation in Torbay for ID 2010 is shown in the first map in Annex B. The second map in this Annex shows the pattern for IMD for the earlier ID 2007.

A total of 6 of the 12 Torbay LSOAs among the most deprived 10% in England are within the most deprived 5% nationally. The most deprived of these LSOAs are in Ellacombe ward in Torquay and Roundham-with-Hyde ward in Paignton. Annex C illustrates the location of and degree of deprivation in the 14 most deprived LSOAs in Torbay, and provides an OS map for context.

Local Authority Summaries

In addition to the Indices, the Department for Communities and Local Government have produced six local authority summaries² of the data which give rankings of deprivation for all 326 English district and unitary authorities. Torbay is in the most deprived 100 for all of these summary measures. The summary in which Torbay is ranked as most deprived is for average IMD rank, at 49 of all 326 authorities.

¹ Super Output Areas (SOAs) were developed to provide geographies that are of approximately consistent size across the country, and whose boundaries would not change over time. Each Lower Layer SOA has a minimum population of 1,000 and a mean population of 1,500, and they are constrained by the boundaries of the wards used for 2001 Census outputs.

² The six local authority summaries are: Average IMD score; Average IMD rank; Extent of deprivation; Local concentration of deprivation; Scale of income deprivation; and Scale of employment deprivation.

Torbay's Deprivation by Domain

The domains within which deprivation is most prevalent in Torbay can be highlighted by which have the highest number of LSOAs within the most deprived 10% or 20% nationally. The table below gives details:

No. of Torbay LSOAs (out of 89) in	Domains							
	IMD	Income	Employment	Health and Disability	Education, Skills & Training	Barriers to Housing & Services	Crime	Living Environment
Most deprived 10% England Change 07 – 10	12 +2	6 +0	13 +1	8 +1	4 +0	1 +0	9 +2	16 -1
Most deprived 20% England Change 07 – 10	14 +0	19 +3	33 +6	14 -1	11 +0	7 -1	17 +0	32 -3

The most prevalent forms of deprivation in Torbay relate to the living environment and employment domains. Almost a fifth of its LSOAs are among the most deprived 10% in England in the first of these, while, in the second, this is the case for about 15% of LSOAs.

The sub domains of income, education, barriers and the living environment give further indications of the type of deprivation most affecting Torbay:

No. of Torbay LSOAs (out of 89) in	Sub-Domains							
	Income Affecting Children	Income Affecting Older People	Education: Children & Young People	Education: Skills	Geographic Barriers to Housing & Services	Wider Barriers to Housing & Services	Indoors Living Environment	Outdoors Living Environment
Most deprived 10% England Change 07 – 10	7 +5	3 -2	5 +1	3 +0	0 -2	0 +0	30 +0	0 +0
Most deprived 20% England Change 07 – 10	15 +3	16 -1	16 -3	8 +0	11 +4	14 -2	47 +0	1 -4

Deprivation relating to the living environment in Torbay is almost entirely due to the condition of housing. Over a third of Torbay's LSOAs are within the most deprived 10% in England in the Indoors Living Environment sub-domain. As Annex A indicates, just two indicators feed into this sub-domain, measuring social and private housing in poor condition and houses without central heating. The number of LSOAs in the most deprived 10% for the indoors living sub-domain has not changed since the 2007 Indices of Deprivation.

The education sub domains indicate that lack of achievement among children contributes slightly more to education, skills & training deprivation in Torbay than lack of qualifications among adults.

The income sub-domains indicate that income deprivation continues to have a slightly bigger impact on older people in Torbay than on children and young people. Annex D includes maps of Torbay showing the location of deprivation in each domain and sub domain.

Annex A – Indices of Deprivation: Domains, Sub-Domains and Indicators

Index of Multiple Deprivation (IMD) 2010		
Domains	Sub-Domains	Indicators
Income Deprivation (22.5% of IMD)	Income Deprivation Affecting Children Index Income Deprivation Affecting Older People Index (Two age based summaries of all six indicators)	Adults and children in <ul style="list-style-type: none"> Income Support Households¹ Income-Based JSA Households¹ Pension Credit (Guarantee) Households¹ Low income Child Tax Credit Households² and <ul style="list-style-type: none"> Asylum seekers in England in receipt of subsistence support, accommodation support, or both³
Employment Deprivation (22.5% of IMD)		<ul style="list-style-type: none"> Working age recipients of Jobseekers Allowance¹ Working age recipients of Incapacity Benefit¹ Working age recipients of Severe Disablement Allowance¹ Working age recipients of Employment Support Allowance^a Participants in the New Deal for the 18-24s not in receipt of JSA¹ Participants in the New Deal for 25+ not in receipt of JSA¹ Participants in the New Deal for Lone Parents¹
Health Deprivation and Disability (13.5% of IMD)		<ul style="list-style-type: none"> Years of Potential Life Lost (YPLL)⁴ Comparative Illness and Disability Ratio (CIDR)¹ Measures of acute morbidity, derived from Hospital Episode Statistics⁵ Proportion of adults under 60 suffering from mood or anxiety disorders^{1,5,6}
Education, Skills and Training Deprivation (13.5% of IMD)	Children/young people	<ul style="list-style-type: none"> Average test score of pupils at Key Stage 2⁷ Average test score of pupils at Key Stage 3⁷ Average capped points score at Key Stage 4⁷ Proportion of 16 plus not staying on in school or non-advanced education¹ Secondary school absence rate⁷ Proportion of those aged under 21 not entering higher education^{8,9}
	Skills	<ul style="list-style-type: none"> Proportions of adults aged 25-54 with no or low qualifications¹⁰
Barriers to Housing and Services (9.3% of IMD)	Wider Barriers	<ul style="list-style-type: none"> Household overcrowding¹⁰ Percentage of homeless households¹¹ Difficulty of Access to owner-occupation¹²
	Sub Domain: Geographical Barriers	<ul style="list-style-type: none"> Road distance to a GP surgery¹³ Road distance to a supermarket or convenience store¹⁴ Road distance to a primary school⁷ Road distance to a Post Office¹⁵
Crime (9.3% of IMD)		<ul style="list-style-type: none"> Burglary (4 recorded crime offence types)¹⁶ Theft (5 recorded crime offence types)¹⁶ Criminal damage (11 recorded crime offence types)¹⁶ Violence (19 recorded crime offence types inc. robbery)¹⁶
Living Environment Deprivation (9.3% of IMD)	The 'indoors' living environment	<ul style="list-style-type: none"> Social and private housing in poor condition^{11,17} Houses without central heating¹⁰
	The 'outdoors' living environment	<ul style="list-style-type: none"> Air quality^{18,19} Road traffic accidents involving injury to pedestrians and cyclists²⁰

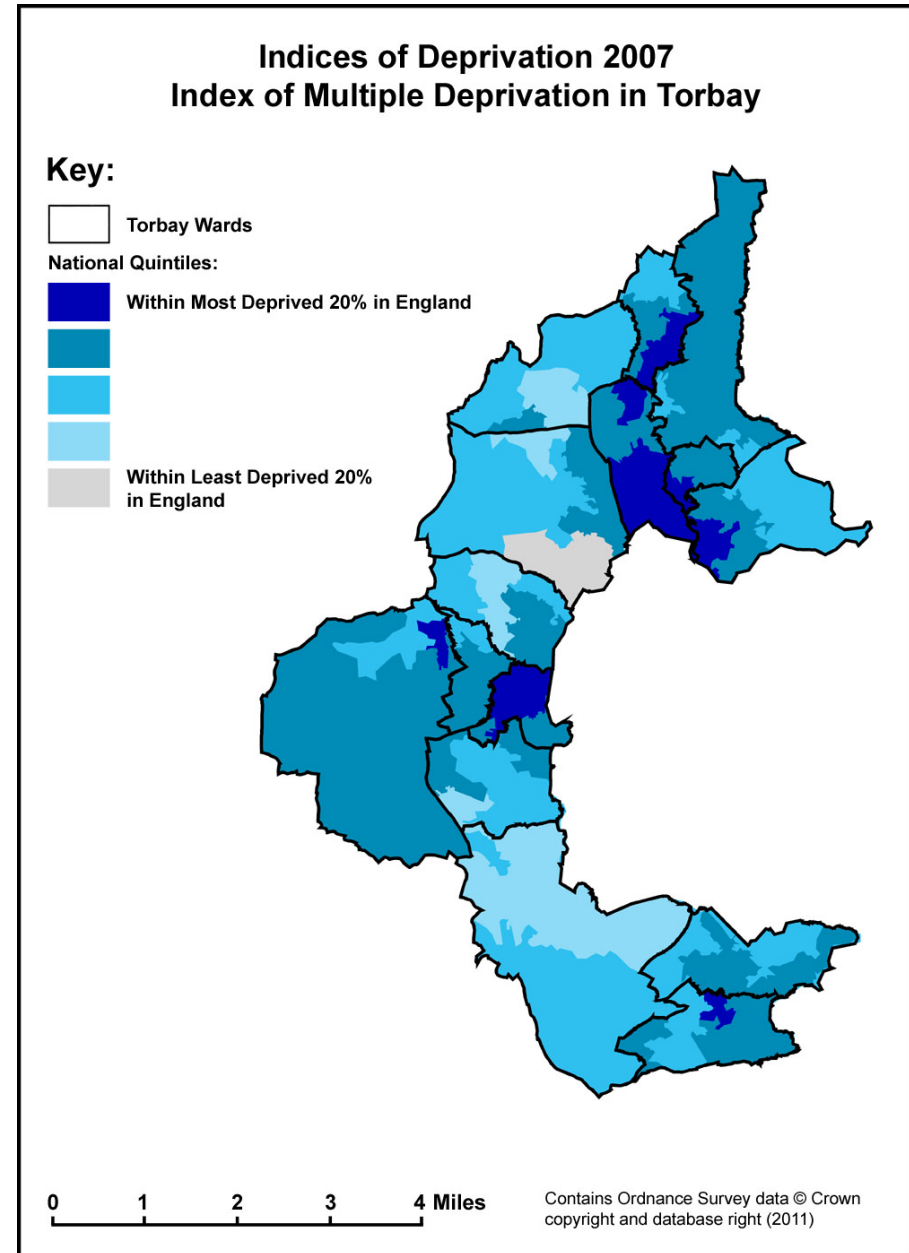
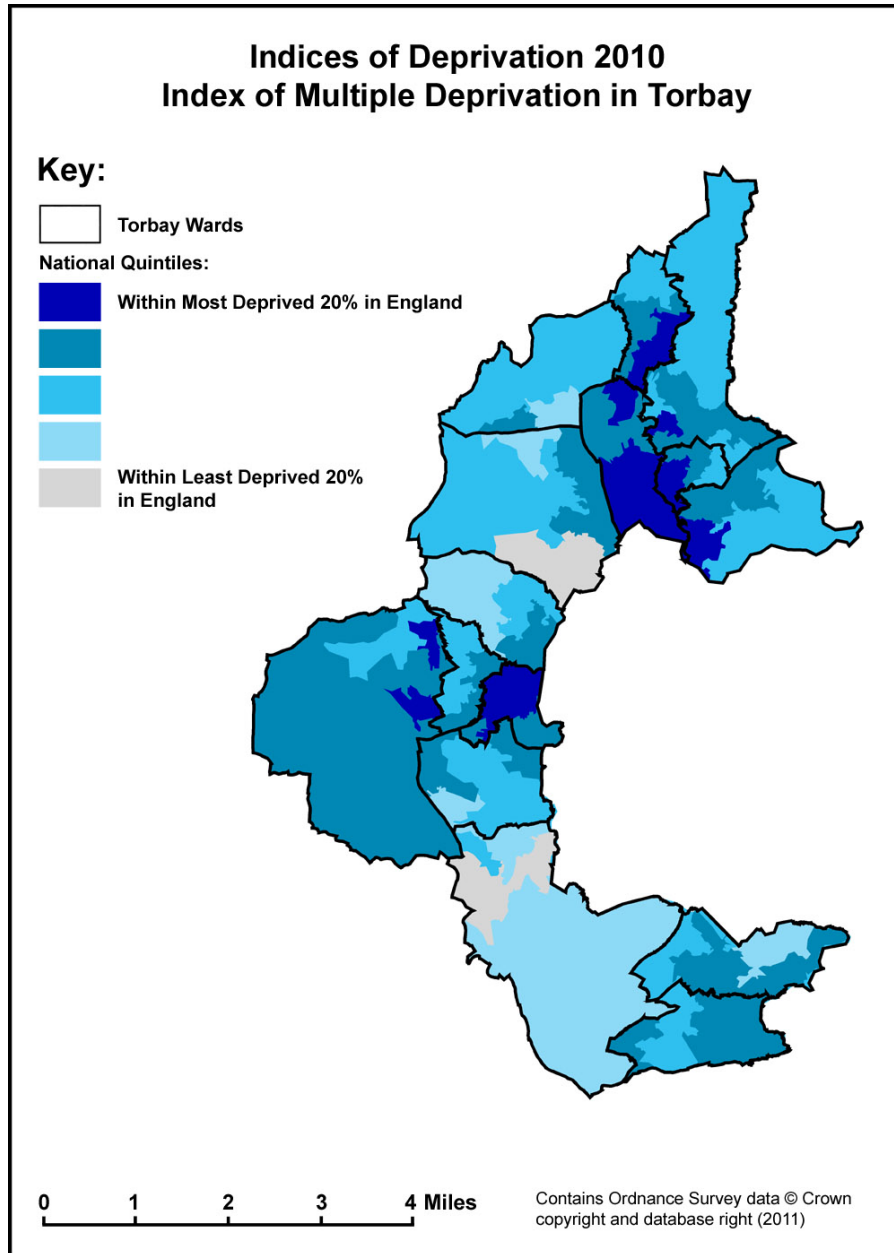
Sources:

- | | | |
|---|--|--|
| 1. DWP (Department for Work & Pensions). | 2. HMRC (HM Revenue & Customs). | 3. NASS (National Asylum Support Service) |
| 4. ONS (Office of National Statistics). | 5. Department of Health. | 6. Prescribing Pricing Authority |
| 7. DCSF (Dept for Children Schools & Families). | 8. UCAS (Universities & Colleges Admission Service). | |
| 9. HESA (Higher Education Statistics Agency). | 10. 2001 Census (ONS) | 11. CLG (Communities & Local Government). |
| 12. Heriot-Watt University. | 13. National Admin. Codes Service | 14. MapInfo Ltd |
| 15. Post Office Ltd. | 16. Police Force Data. | 17. BRE (Building Research Establishment). |
| 18. Staffordshire University. | 19. NAEI (National Atmospheric Emissions Inventory). | |
| 20. DfT (Department for Transport) | | |

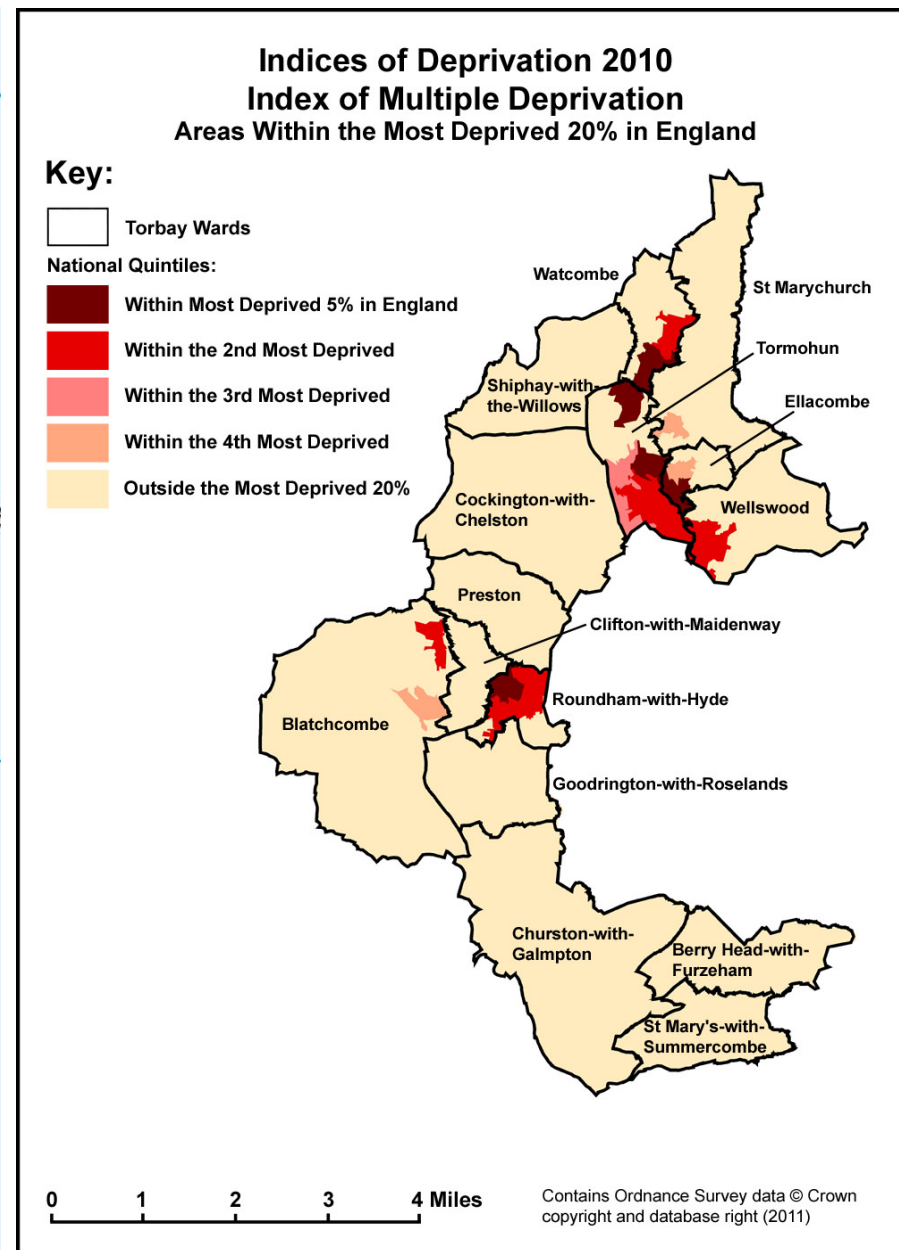
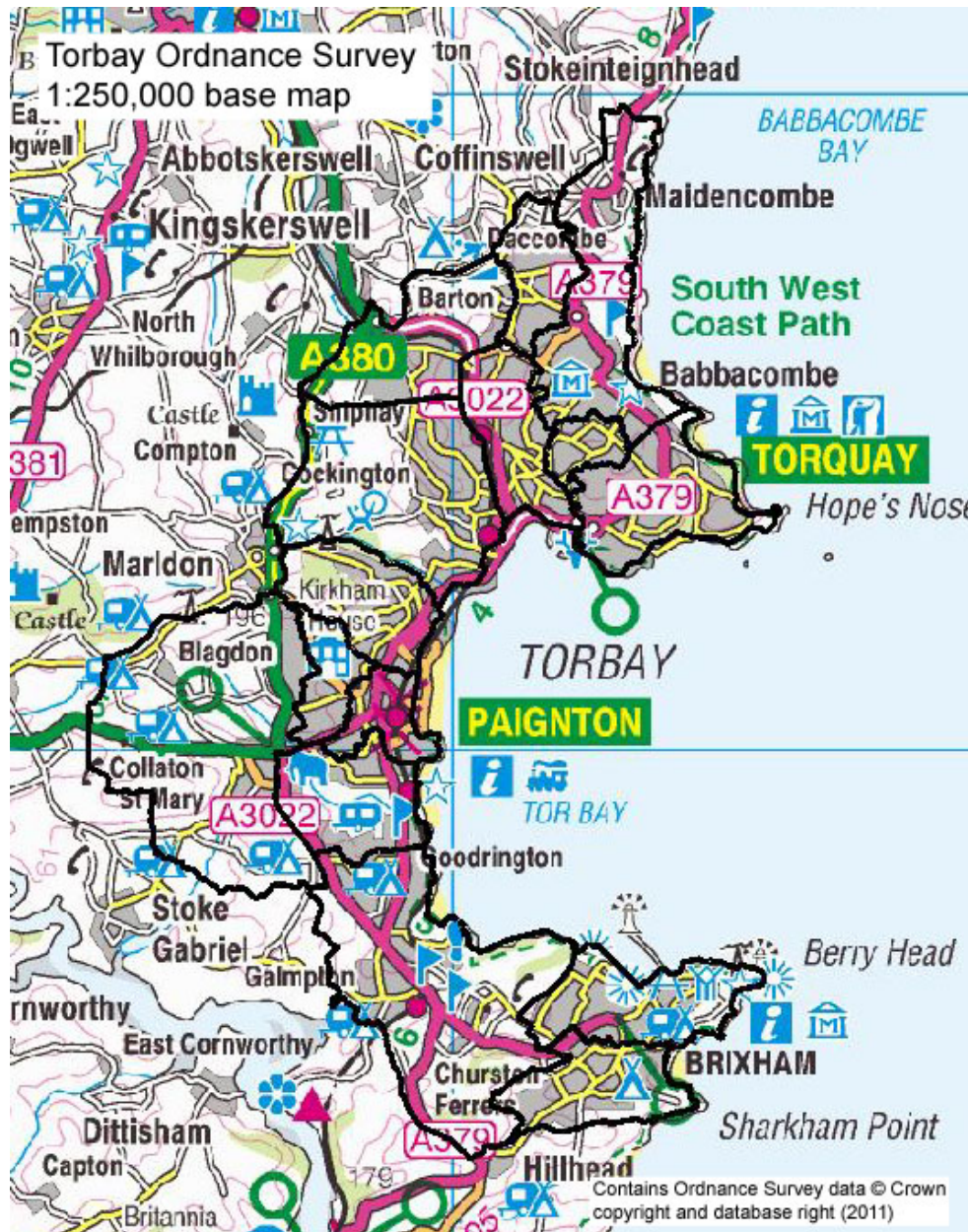
a) Employment & Support Allowance was introduced in Oct 2008 & is only contained within the final or the four quarterly cuts of data.

Further Information about Indicators: <http://www.communities.gov.uk/documents/statistics/pdf/1871208.pdf>

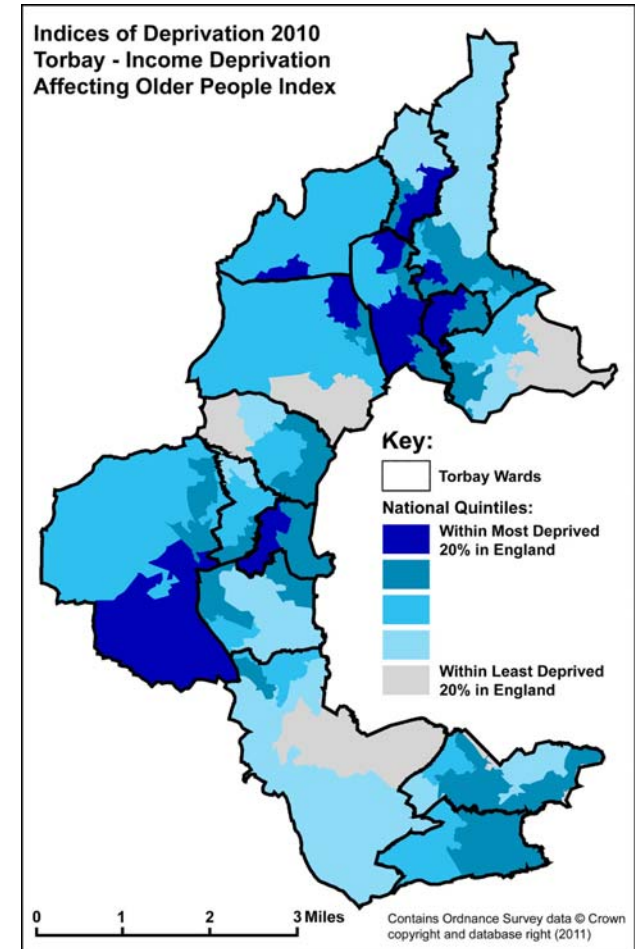
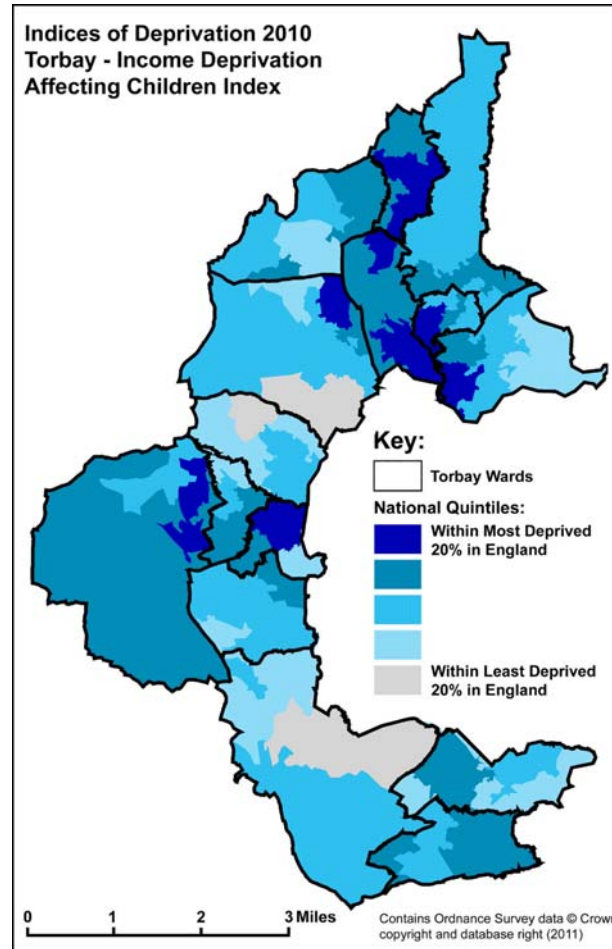
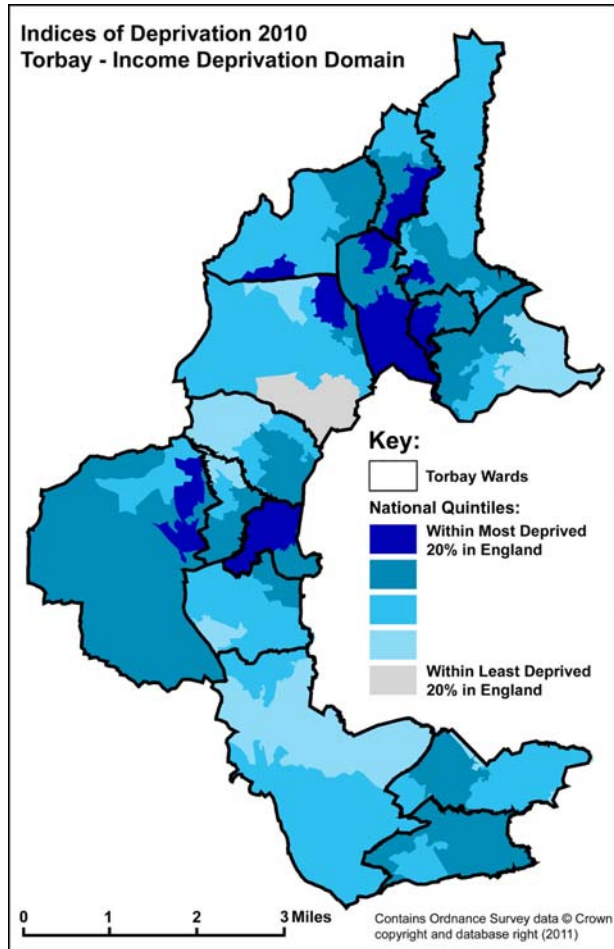
Annex B: Maps of Index of Multiple Deprivation (IMD) in Torbay for ID 2010 and ID 2007



Annex C: Maps of Ordnance Survey 1:250,000 and Torbay's Most Deprived Areas (IMD 2010)



Annex D: Deprivation by Domain and Sub Domain Income Domains and Sub Domains



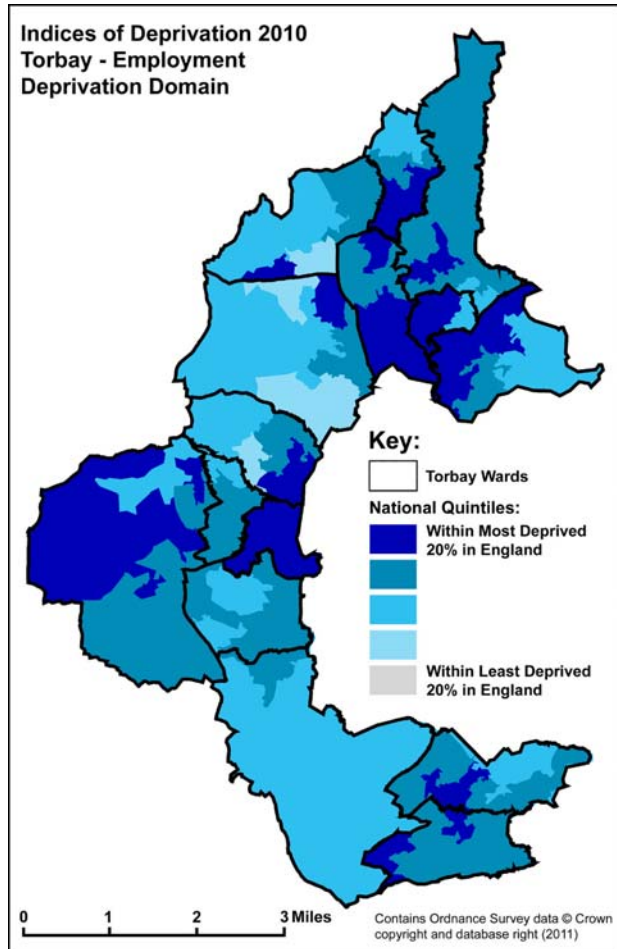
Income Domain Indicators:

Adults and children in households receiving
Income-based benefits.

Sub Domain Indicators:

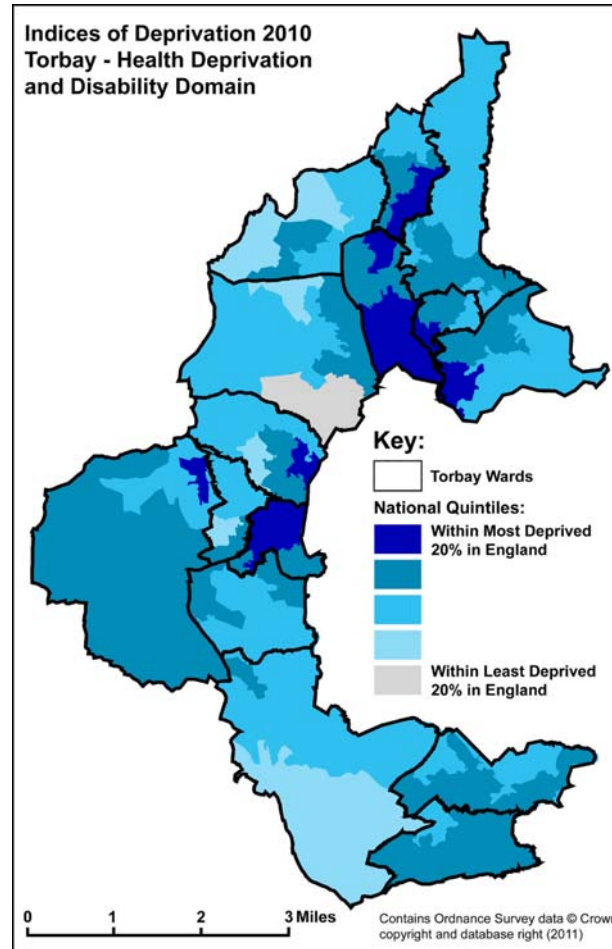
Children and older people receiving income-based benefits.

Employment, Health and Crime Domains



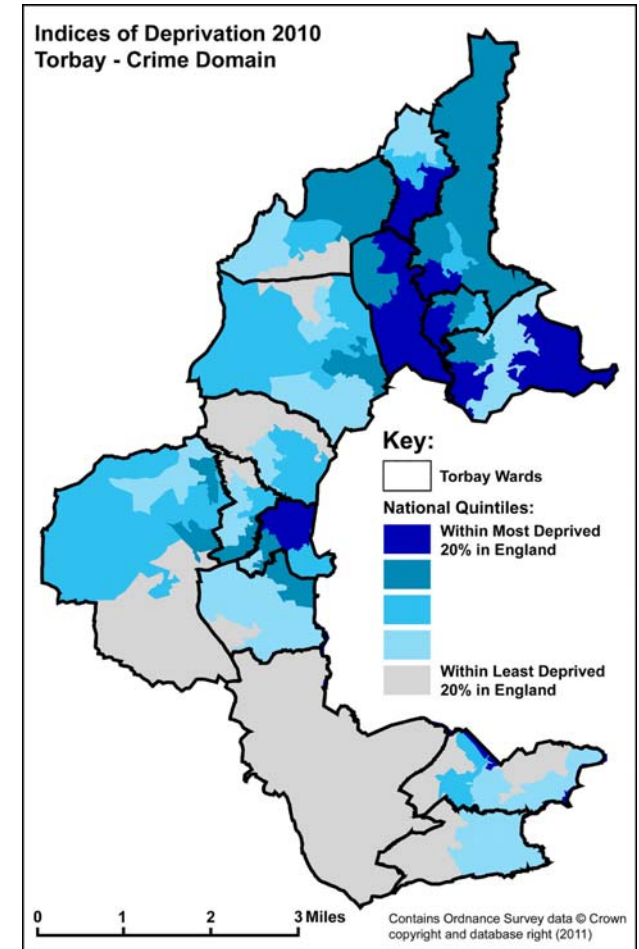
Employment Domain Indicators:

Unemployment & Incapacity benefit recipients & participants in "New Deals".



Health Domain Indicators:

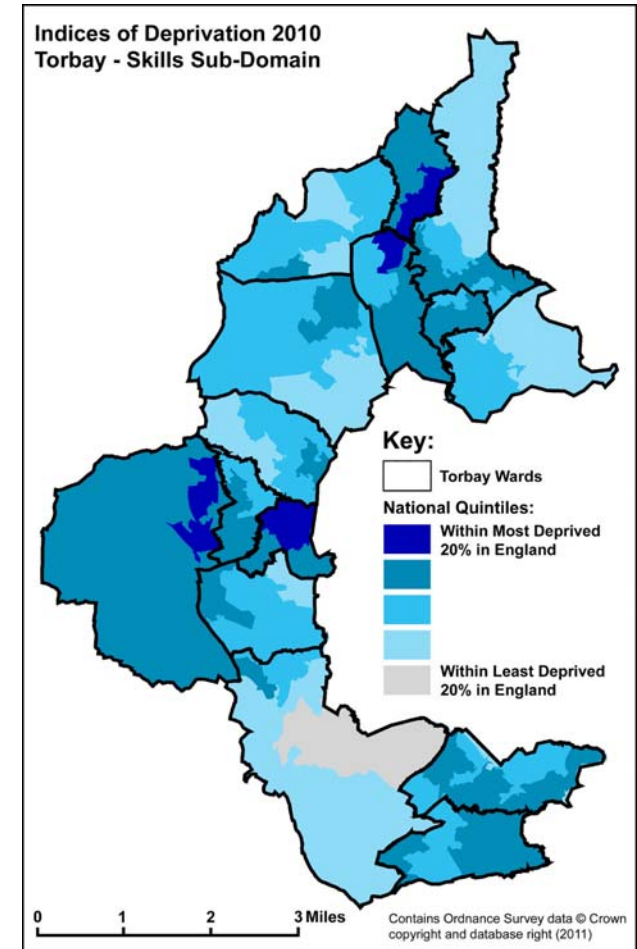
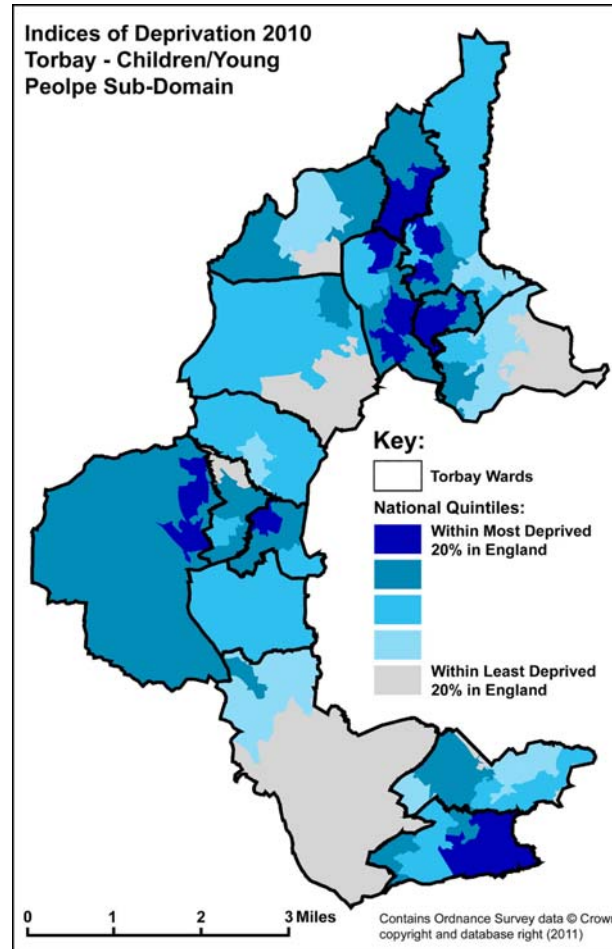
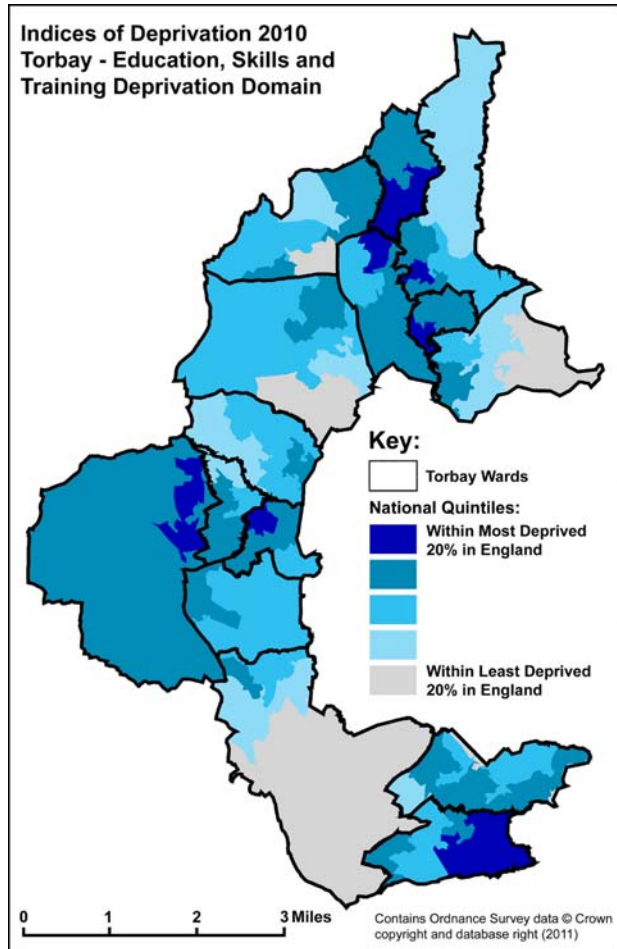
Measures of illness and disability, mental Health problems and hospital admissions.



Crime Domain Indicators:

Crime rates for burglary, violence, theft And criminal damage."

Education, Skills and Training Domain and Sub-Domains



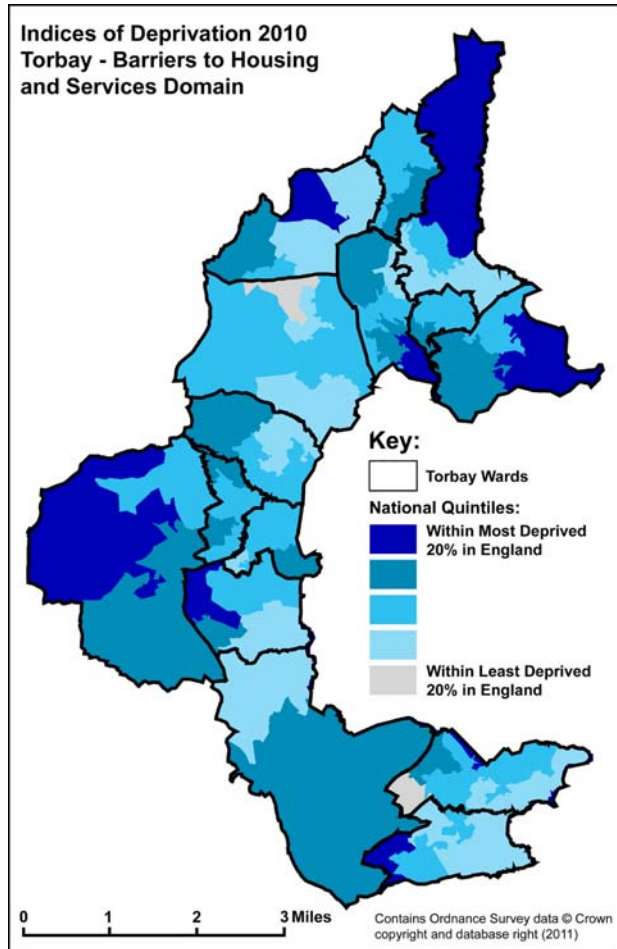
Education Domain Indicators:

Performance at Key Stages 2, 3 & 4, number staying on at school and numbers entering higher education, school absenteeism and proportion of people with no or low qualifications.

Sub-Domain Indicators:

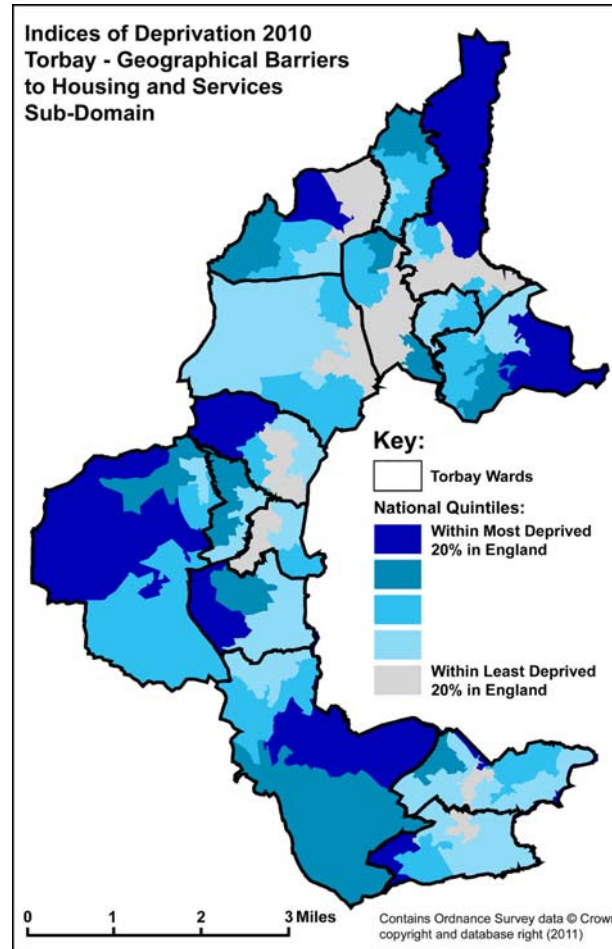
The Children and Young People sub-domain is made up of all indicators except the one relating to qualifications, which is the single indicator in the Skills sub-domain.

Barriers to Housing and Services Domain and Sub-Domains



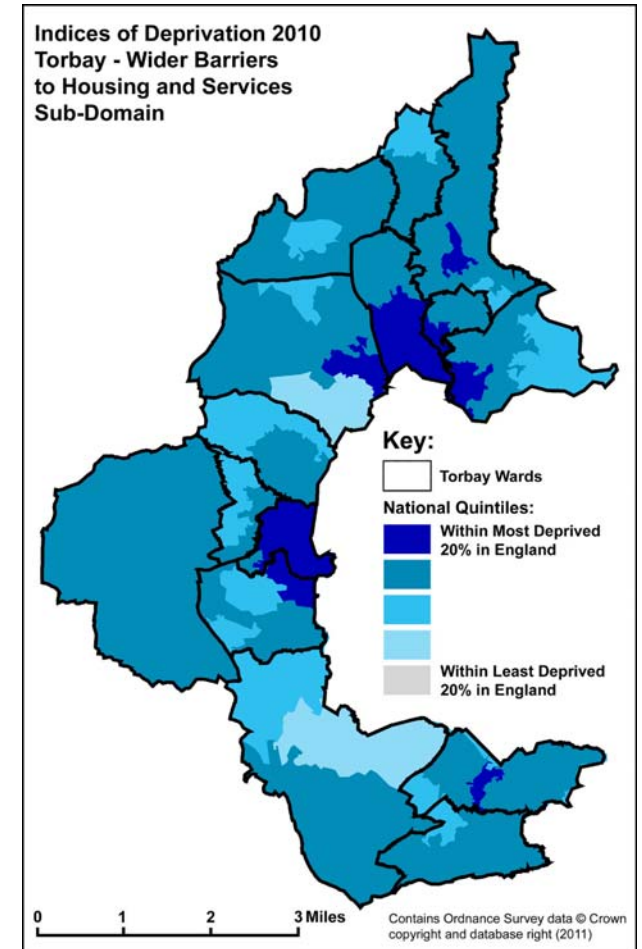
Barriers Domain Indicators:

Road distance to a GP, supermarket or convenience store, primary school and post office, overcrowding, difficulty of access to owner-occupation and homelessness.



Geographical Barriers Sub-Domain Indicators:

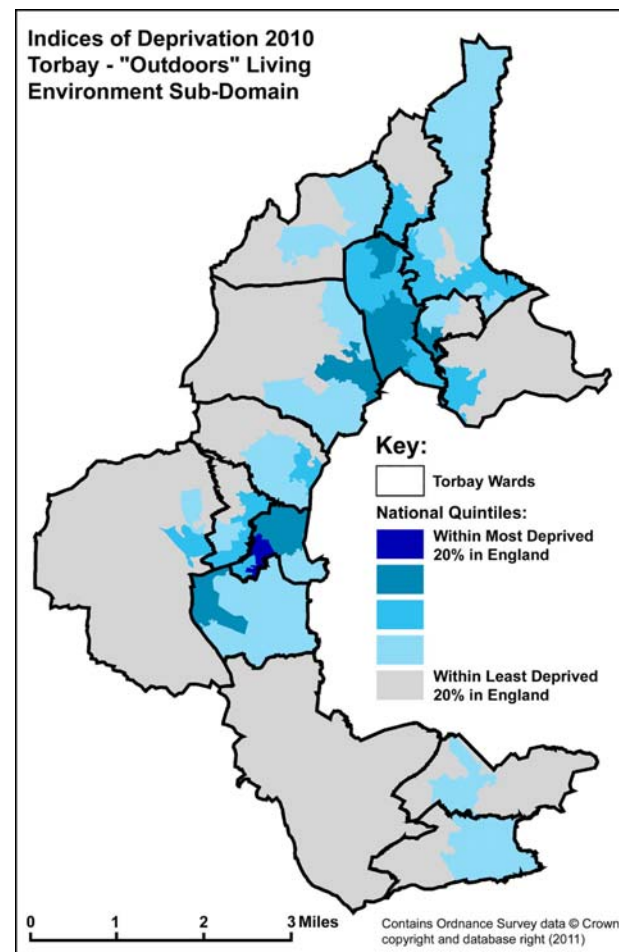
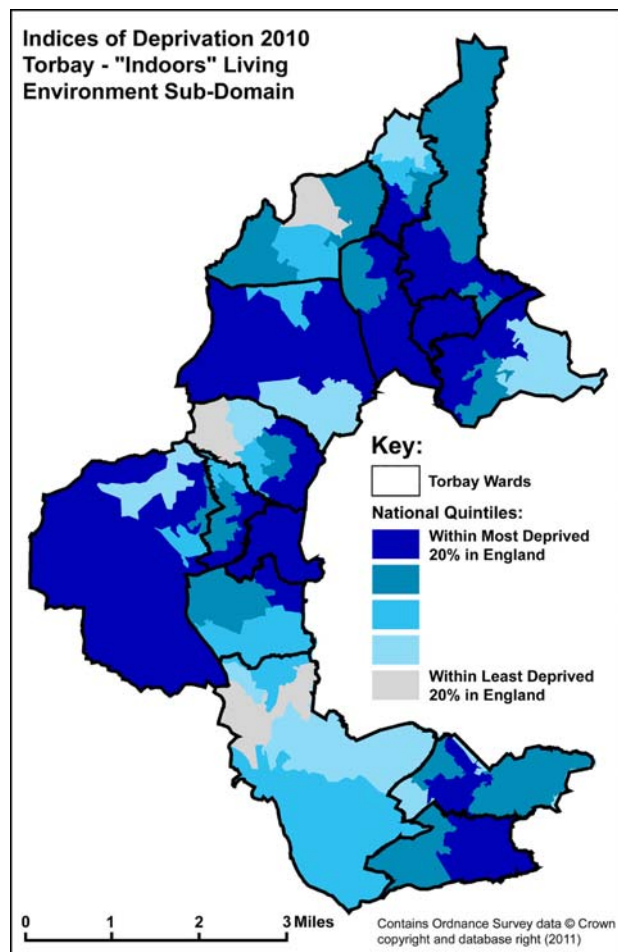
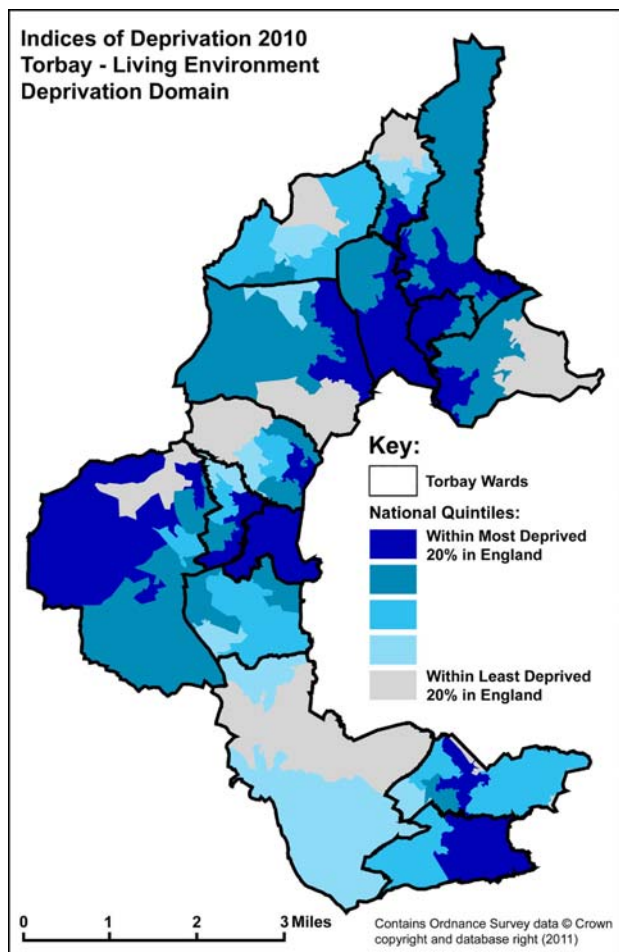
Only the road distance indicators.



Wider Barriers Sub-Domain Indicators:

Overcrowding, access to owner-occupation and homelessness.

Living Environment Domain and Sub-Domains



Living Environment Domain Indicators:

Social and private housing in poor condition, houses without central heating, air quality and road accidents to pedestrians and cyclists.

Indoors Living Environment Sub-Domain Indicators:

Those relating to housing in poor condition, and without central heating.

Outdoors Living Environment Sub-Domain Indicators:

Air quality and road accidents.